

## USAGE OF THE SYSTEM

To use the system please follow the next steps and procedures:

- 1 Connect the electrical connection cable between the control panel and “life fire trainer” tank. Check the reliability and correctness of the connection.



- 2 Check the connection between the high current transformer and the spark plug.
- 3 Check the battery level. The voltmeter is installed on the control panel. If the battery charge is insufficient, connect the battery to a charger. The charger is included as standard, Check that the emergency shutdown button is not in the pressed position.



- 4 Connect a liquid propane cylinder to the reducer. Check that the connections are secure. It is recommended to use a personal gas analyzer calibrated to detect propane in the atmosphere.

**Attention!**

It is prohibited to use the life fire trainer if the presence of propane is detected in the atmosphere. Check all connections for leaks and, if necessary, replace the connecting elements with new ones.

- 5 Check the pressure in the gas system on the pressure gauge installed on the control panel

**Attention!**

The optimal pressure in the system should be set at 2-3 Bar.  
Press the button to activate the ignition. Check that the spark plug is working properly.

**Attention!**

It is forbidden to touch the body of the bathtub while the ignition candle is activated.

- 6 To activate combustion, press the gas supply button and then hold the spark plug activation button until it ignites.
- 7 The gas supply button activates the solenoid valve for supplying gas to the system.
- 8 To complete combustion, press the gas button again.
- 9 In case of emergency, activate the emergency shutdown button.

## REMOTE CONTROL – SAFETY & OPERATING INSTRUCTIONS

### Remote Control Functions

- Button A – Gas supply ON/OFF
- Activates the solenoid valve and supplies propane gas to the system.
- Button B – Burner ignition
- Activates the ignition spark plug for burner ignition.

### Operating Procedure

1. Ensure all gas and electrical connections are properly connected and leak-free.
2. Check that the system pressure is within 2–3 Bar.
3. Verify that the emergency stop button is released.
4. Press Button A to start gas supply.
5. Immediately press and hold Button B until ignition occurs.
6. Release Button B after stable combustion is achieved.
7. To stop combustion, press Button A again



### Safety and Attention

- Attention: Before operating the device, carefully read all instructions.
- Warning: Ensure all electrical components are handled with caution. Avoid contact with exposed wiring.
- Safety: Wear appropriate protective equipment if required.
- Caution: Do not operate the device if any component appears damaged.

### First Startup Procedure

Before first use, make sure to connect the battery clamp correctly.

1. Verify Battery Connection:

- Ensure the battery terminal clamp is securely connected to the battery.

2. Open the Compartment:

- Open the designated compartment or drawer to access the internal components.

3. Check the Clamp Functionality:

- Confirm that the clamp is functioning correctly and firmly attached.

4. Refer to Provided Photo:

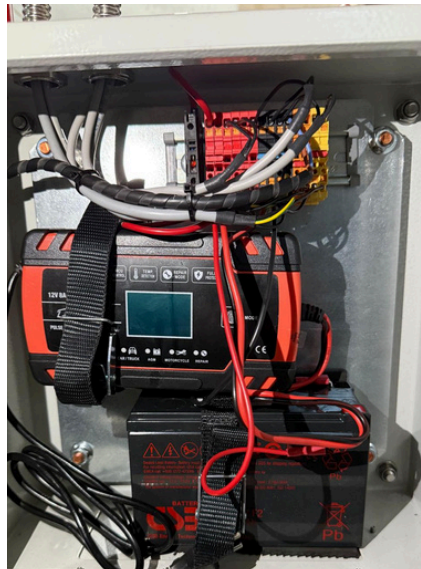
- Compare the connection and clamp positioning with the reference photo to ensure accuracy.

### Notes

- If any issue is detected during inspection, stop the procedure and troubleshoot before proceeding.
- Only trained personnel should perform these steps.



**Battery terminal clamp.**



**Device in the OFF state.**



**Device in the ON state.**

## EMERGENCY SITUATION

An emergency should be considered a situation when there is a possibility of any risk for the training crew member and/or the risk of any elements damage of the fire trainer.

### Typical emergencies

- Functional failure of any training element.
- Mechanical damage of any element.
- Not typical behaviour of ignition systems.
- Not typical behaviour of control systems.
- Complete or partial failure of the control.
- Any situation in which the crew can assume or identify the risk of exposure to human health.
- Any situation in which the trainee or coach can assume a risk or damage of any elements of the simulator.

### Emergency stop function.

The life fire trainer is equipped with an emergency process stop system. When the emergency stop button is pressed, all training processes will be stopped, After the activation of the emergency stop system, all functional devices will be in a deactivated status.

### Warning!

Use only original Arete cables and wires to connect trolley and fire tank.

### Safety Instructions

### Warning!

- Do not use the system if propane gas is detected in the surrounding atmosphere.
- It is recommended to use a personal propane gas detector during operation.
- Never touch the metal body of the trainer while the ignition system is active.
- Keep the remote control dry and protected from water or moisture.
- Do not operate the system near flammable materials or in enclosed, non-ventilated spaces.

### Remote Control Limitations

- Button B (ignition) must not be held continuously for more than 5 seconds.
- If ignition does not occur within 5 seconds:
  - a. Release both buttons.
  - b. Wait at least 10 seconds before retrying.
- Continuous operation of the ignition system may damage the ignition components.

### Emergency Shutdown

- In case of malfunction, uncontrolled flame, or gas leak, immediately activate the Emergency Stop Button on the control panel.

## WARRANTY & MAINTENANCE

### Warranty Conditions

- The manufacturer provides a warranty against manufacturing defects under normal operating conditions.
- The warranty does not cover damage caused by:
  - improper operation,
  - unauthorized modifications,
  - gas leaks caused by incorrect connection,
  - water ingress,
  - mechanical damage,
  - overheating due to prolonged ignition activation.
- The ignition button must not be held continuously for more than 5 seconds.
- Use only recommended propane equipment and approved accessories.

### Maintenance & Inspection

#### Before Each Use

##### Before operating the system:

- Check all gas connections and hoses for leaks or damage.
- Verify that the pressure gauge indicates 2–3 Bar operating pressure.
- Check the battery charge level.
- Ensure the ignition system and spark plug operate correctly.
- Verify that the emergency stop button is released and functioning properly.
- Make sure no propane gas is present in the surrounding atmosphere.

#### After Each Use

- Shut off the propane cylinder and disconnect the gas supply if required.
- Allow the system to cool completely before storage.
- Dry the unit thoroughly after every use, especially if exposed to moisture, rain, or condensation.
- Keep the remote control and electrical components clean and dry.
- Store the system in a dry, ventilated location away from direct sunlight and flammable materials.

### Important Safety Notes

- Never operate the system unattended.
- Do not use the system in enclosed or poorly ventilated areas.
- Do not expose electrical components to water.
- Replace damaged hoses, cables, or connectors immediately.
- Periodically inspect all electrical and gas components for wear or corrosion.
- Only trained personnel should operate or service the equipment.